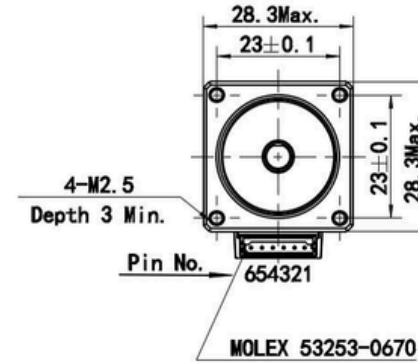
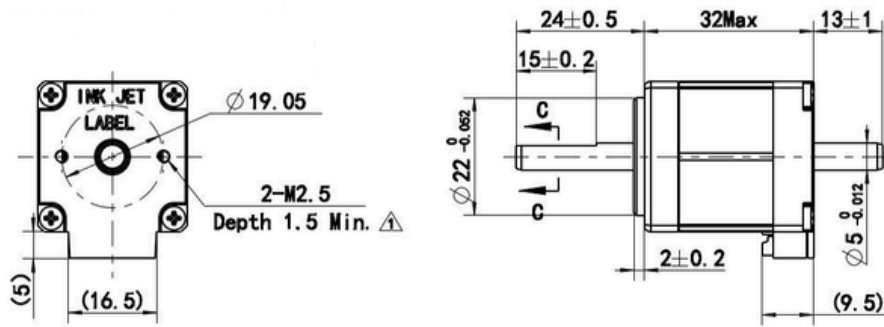
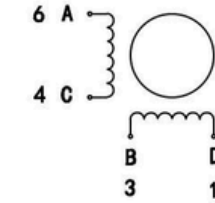


MS11HS1P4100-M



Wiring Diagram

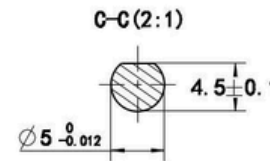


Exciting Sequence vs. Direction of Rotation

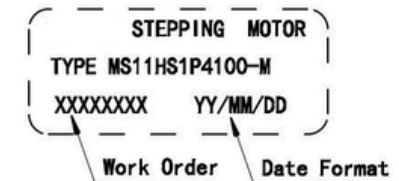
STEP	A	B	C	D	CCW
1	+	+	-	-	↑
2	-	+	+	-	
3	-	-	+	+	
4	+	-	-	+	

Clockwise view from mounting side

Specification	
1. Number of Phase	2
2. Step Angle	1.8°
3. Rated Voltage	2.7 V DC
4. Rated Current	1 Amp
5. Holding Torque	0.09 Nm Typ. (Two phase on/rated current)
6. Phase Resistance	2.7 ohm ±10% (20°C)
7. Phase Inductance	2.5 mH ±20%(1kHz 1V rms)
8. Rotor Inertia	9 gcm ²
9. Motor Weight	0.10 kg
10. Insulation Class	B (130°C)



Label Detail



			Unit:mm							
			First angle method							
			Tolerances for linear and angular dimensions without individual tolerance indications GB/T 1804-m eqv ISO 2768-1:m							
			Geometrical tolerance for features without individual tolerance indications GB/T 1184-K eqv ISO 2768-2:K							
A1	EGR:23-1989, There are one positions	2023.11.14								
A0	Original revision	2017.09.20								
REV.	REVISION RECORD	DATE	UNLESS OTHERWISE SPECIFIED	NAMES	SIGNATURE	DATE	Drawing No: 4611110027591	Rev. A1	SCALE: 1:1	Sheet 1 of 1

PIVEXIN
TECHNOLOGY